

CRE: DEGREES OF IMPACT



Empower 360: Shaping the Future of Sustainable Real Estate

Welcome to the 2024 CoreNet Global Singapore Chapter Symposium—an electrifying call to action for real estate visionaries who are ready to ignite change, challenge norms, and redefine Environmental, Social, and Governance (ESG) practices.

Why Empower 360?

The real estate industry stands at a crossroads. Climate change, social equity, and governance imperatives converge, demanding more than mere compliance. ESG has ceased to be a buzzword – it is the core foundation of a responsible business.

Climate Change: A Tipping Point for Our Planet

In the delicate balance of the Earth's ecosystems, a mere **1-degree increase** can unleash chaos. Glaciers retreat, seas swell, and weather patterns shift. Coral reefs bleach, forests wither, and species vanish.



2024 Symposium Co-Chairs



Andrew Alldis
Executive Director
Global Head of
Portfolio Performance
Standard Chartered



Jade Tong
Business Development
Consultant



Each Degree Matters

As professionals, we wield influence—our buildings, energy choices, and designs ripple through the climate fabric. By embracing sustainable practices, advocating for green spaces, and fostering resilient communities, we can shift the needle —one degree at a time.

Join us as we extend an invitation to occupiers, landlords, developers, service providers, and ESG experts. Our goal is to connect you and provide a 360-degree view that unveils hidden opportunities, untapped synergies, and sustainable growth pathways.

This year's Symposium aims to assess our members' needs, offering forward-thinking perspectives, deep insights, strategic connections, and actionable strategies to a practical roadmap for sustainability while driving revenue growth.

Our mission is simple yet profound: support CoreNet Global professionals to embrace ESG as fundamental to their business core strategies.

SYMPOSIUM 2024

Empower 360 : Ignite Change

Date

Thursday 17 October

Time

17:00 – 23:00

Location

Pan Pacific Orchard Hotel
10 Claymore Road,
Singapore, 229540

Embedded Carbon in Buildings is Often Overlooked

While operational carbon (emissions from building operations) gets the most attention, **embedded carbon**—the emissions released during the production, transportation, and assembly of building materials—accounts for **up to 50%** of a building's total lifetime emissions.

Scope 3 Emissions: The Hidden Challenge in Real Estate

While Scope 1 (direct emissions) and Scope 2 (energy-related emissions) are often the primary focus, **Scope 3 emissions**—which include tenant activities, employee commutes, and supply chain impacts—can account for **up to 70%** of a building's total carbon emissions.

Agenda

Time	Event	Details
17:00	Registration and networking Drinks & Canapés Level 11 - Garden Terrace	Join us for drinks, canapés, and networking with ESG, sustainability, and industry leaders. Enjoy a "Make Your Own Mojito" session using fresh ingredients from Grobrix's modular edible green wall. Live entertainment.
18:00	Open and welcome Student Awards	The symposium starts at 18:00. We will recognise emerging talents with the CoreNet Global Singapore Chapter Student Award, supporting young adults at the start of their careers.
18:30	Guest to move to Level 18 Cloud Terrace	At level 18 you will select your main course using flowers—each representing a specific meal option: Vegetarian, Fish, Meat, or Special. Contact singaporechapter@corenetglobal.org for any special meal requirements.
19:00	Level 18 - Claymore Ballroom	As the ballroom doors open, guests can find their seats with the help of symposium ushers. The seating plan will be displayed on the screen to assist.
19:20	Formal open RJ Kidz Dance Open	CoreNet Global Singapore Chapter 2024 Symposium Chairs Andrew Alldis and Jade Tong will give a formal welcome, followed by a performance by RJ Kidz Dance Troupe titled 'Superheroes'.
19:30	Keynote	Susanna Hasenoehrl keynote presentation.
19:50	Keynote	Anthea Ong keynote presentation.
20:10	Carbon Conscious Cuisine	Anne Lau, Lee Qi Ni, Amelia Matheson highlight the carbon footprint of our menu, whilst Mathew Howes delve into the urban farming concept, and showcase our dedicated efforts to minimise the environmental impact of this event whilst the first and second course is served.
20:20	First, second, and main course served	Savour our carefully curated low-carbon menu.
21:00	Panel Discussion	Join an engaging discussion moderated by Andrew Alldis on turning 'Principles into Profits' with real-world examples, featuring insights from technologists, investors, and industry experts Koon Kok Kwong, Lynette Lee, Lim Chee Chong, Martyn Harrison and Hans Weemaes.
21:20	Degrees of Impact	Hansen Oei will explore the urgent need for coral reef protection, to highlight their global significance for biodiversity and climate stability
21:25	CoreNet Awards	CoreNet Global Singapore Chapter Awards recognises leadership, talent and diversity.
21:35	Lucky Draws	Conclude the symposium with a stunning prize draw, including two open water diving courses in Alor, Indonesia, designer furniture, wellness experience and other fantastic prizes. Don't miss out!
21:45	Cloud Terrace Networking	Enjoy desserts on the terrace and enjoy stunning views, whilst formal photography occurs on stage.
23:00	Carriages home	As the event concludes, we hope you leave inspired to drive positive ESG changes.

Detailed Programme

17:00 - 18:00

**VIP & Sponsor Welcome Reception
By Invitation Only**

Garden Terrace – Level 11

Join us for an exclusive VIP gathering tailored for our distinguished guests and sponsors. Enjoy drinks and canapés while connecting in an intimate, networking setting. We offer a unique opportunity to engage with influential leaders leading the way in ESG, sustainability, and industry innovations. Experience a special "Make Your Own Mojito" session for VIPs, where you can craft your perfect cocktail using fresh ingredients from Grobrix's modular edible green wall.

17:00 - 18:00

General Registration, Canapés & Networking for All Other Attendees

Garden Terrace – Level 11

Arrive and register to start your symposium experience. Enjoy a selection of canapés and beverages while connecting with CoreNet Global Singapore Chapter members and distinguish guests. This is a prime opportunity to engage in insightful conversations and forge meaningful connections. Experience the "Make Your Own Mojito" session.

18:00 - 18:30

Welcome, Student Awards, Entertainment

Garden Terrace – Level 11

The symposium begins promptly at 18:00 with a warm welcome and opening remarks. We will then recognise the achievements of emerging talents with the presentation of the CoreNet Global Singapore Chapter Student Award.



Sustainability Meets Sip-ability!

Get ready to shake things up—literally! Don't miss the hands-on "Make your own Mojito" experience, brought to you by the green geniuses at Grobrix. Whether you're going for a classic or a virgin cocktail, you'll mix up something refreshing using ingredients straight from their patented modular edible green wall. It's farming-as-a-service, but with a twist!

18:30 – 19:00

We kindly request all guests to proceed to the Claymore Ballroom on Level 18.

This will ensure ample time to accommodate the second part of the symposium, which will begin promptly at 19:00.

19:00 - 21:20

RJ Kidz Dance Group, Keynote address, Susanna Hasenoehrl Head of Sustainability, SAP Asia Pacific and Japan. Anthea Ong, Former Parliamentarian, Board Chair/Director, and CEO

Carbon Conscious Cuisine

Claymore Ballroom – Level 18

First, Second and Main Course is Served

We are honoured to welcome two distinguished keynote speakers who will provide transformative insights on embedding ESG principles into practices.



Susanna Hasenoehrl
Head of Sustainability, SAP Asia Pacific and Japan

With over 20 years of leadership experience in sustainability and technology, Susanna is driving sustainability outcomes across 25 industries for SAP's customers. A leading expert on AI, carbon accounting, and digital ESG solutions, she will share how technology can accelerate decarbonisation and advance social equity in the corporate world.



Anthea Ong
Former Parliamentarian, Board Chair/Director, and CEO

Anthea Ong, a former Nominated Member of Parliament and prominent advocate for mental health, marginalised communities, and sustainability, brings 30 years of executive leadership. As the founder of impactful social enterprises and a seasoned board chair, Anthea will offer thought-provoking perspectives on the intersection of business, wellbeing, and social impact.

Carbon Conscious Cuisine

We have actively worked to minimise the symposium's carbon footprint through several key initiatives: utilising an electric vehicle for transportation, eliminating single-use items wherever feasible, and collaborating with local vendors and the Pan Pacific Orchard Hotel to curate a low-carbon menu. These efforts reflect our commitment to sustainability and responsible event management.



RJ Kidz is a dynamic and inclusive dance group focused on empowering dancers of all abilities, including individuals with Down Syndrome and other disabilities. Dance is a medium for self-expression, building confidence, and improving physical fitness. Their performances emphasise inclusivity and diversity, aiming to showcase that people of different abilities can thrive in the arts together.

21:20 – 21:45

ESG in Conversation Panel Discussion, CRE Executive of the Year Award Young Leader of the Year Award DE&I Champion of the Year Award Sponsor Prize Draws

*Claymore Ballroom – Level 18
Main Course is Served*

ESG in Conversation

Experience an electrifying discussion on transforming 'Principles to Profits.' using real-world examples, from adaptive reuse to smart technologies, and gain insights from leading technologists, investors, and practitioners.

Degrees of Impact

Hansen Oei, address the critical issue of coral reef and explains how coral reefs serve as the lungs of our oceans, supporting not just local marine life but also contributing to global biodiversity and climate stability

Awards

These prestigious awards celebrate leadership and innovation. Each award recognises outstanding individuals who drive meaningful change, champion diversity, equity, and inclusion.

Sponsor Prize Draw, we will conclude the formal part of the symposium with a spectacular array of prizes up for grabs. Don't miss your chance to walk away with something fantastic.

21:45 – 23:00

Entertainment, Evening Networking

Cloud Terrace – Level 18

Dessert is Served

End the evening on a sweet note with desserts served during a relaxed networking on the stunning roof garden. Take in the spectacular views while enjoying live entertainment, creating the perfect atmosphere to continue building connections and sharing ideas over drinks.



Experience the breathtaking underwater wonders of Alor, Indonesia with a life changing prize of two open water diving courses with Nautika Dive Alor. Renowned for its world-class diving, Alor is a sanctuary for vibrant marine biodiversity.

Nautika Dive is dedicated to coral conservation, highlighting the urgent need to protect these delicate ecosystems from the impacts of climate change. By exploring these pristine waters, you'll witness firsthand the beauty of coral reefs and understand the critical importance of keeping ocean temperatures down to safeguard our planet's future.

FAQ

Q: What is the dress code?

A: The dress code for the symposium is cocktail attire: elegant dresses or smart suits, perfect for a stylish evening event.

Q: What time should I arrive?

A: Please arrive at 17:00 for registration to ensure maximum time for networking.

Q: When does the event's start and end?

The symposium will begin promptly at 18:00 with the formal session to conclude at about 21:40.

Q: Where can I park?

A: Parking is available at the hotel. We have a limited number of complimentary parking vouchers available on a first-come, first-served basis. Please request one upon registration from 17:00. There is a flat parking fee of SGD 6 after 18:00.

Q: How can I inform you of my specific dietary requirements for the four-course meal and canapés?

A: Kindly contact Huziah at singaporechapter@corenetglobal.org with your dietary requirements. Halal option is available.

Q: What is the menu option

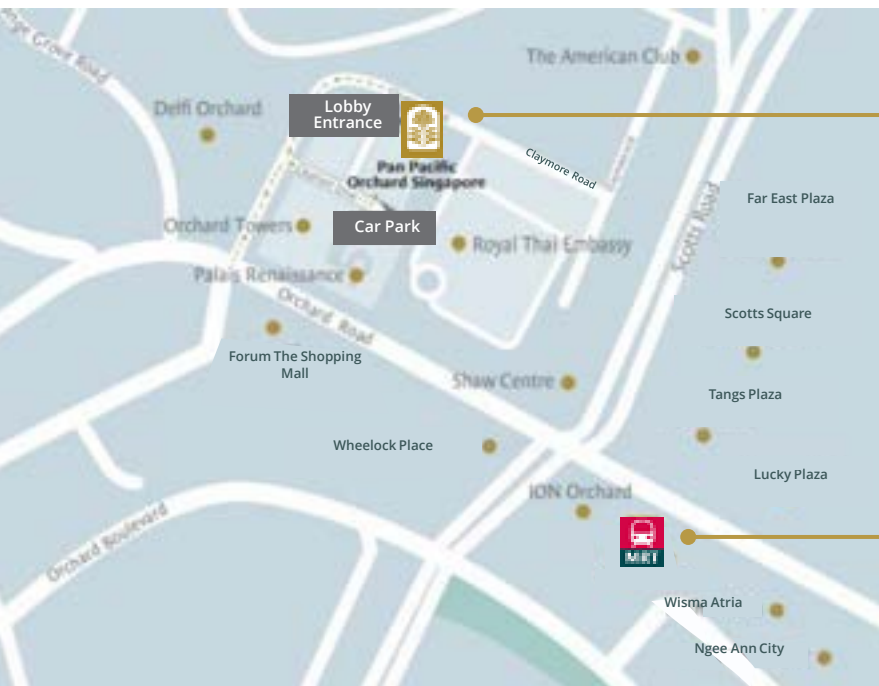
A: Please refer to the menu guide..

Q: Will there be allocated seating?

A: Yes, there will be allocated seats for sponsored tables and assigned tables. The remaining tables will be available on a first-come, first-served basis.

Q: Who are the speakers

A: We have an incredible group of speakers to give you a 360 view of ESG, please refer to the speaker section.



PAN PACIFIC
ORCHARD, SINGAPORE

Taxi

You can get a taxi to Pan Pacific Orchard Hotel, 10 Claymore Road, 229540. Do allow for extra time for traffic leading to Orchard.

MRT

Take the North-South Line (Red Line) and alight at Orchard MRT Station (NS22). From there it is a 10-15 walk to the hotel.

Bus

There are several bus pass near the hotel, including bus number 7, 36, 105, 106 and 111.

Level 11 - Garden Terrace



Level 18 - Cloud Terrace



Level 18 - Claymore Ballroom



Connect.

Learn.

Grow.

Belong.

A Reduced Carbon Event



The CoreNet Global Singapore Chapter is a not-for-profit organisation consisting of volunteers. The Empower 360 symposium team have taken great care to make sustainability a core element of this event, both in action and intention:

Sustainable Venue

We selected the Pan Pacific Orchard Hotel for its outstanding sustainability credentials, aligning with our commitment to host an environmentally responsible event. The hotel exemplifies incorporating eco-friendly practices such as energy-efficient operations, water conservation measures, and a focus on minimising waste.

The temperature of the Claymore Ballroom will be set to a comfortable **24 degrees Celsius**. This adjustment helps us conserve energy while ensuring a pleasant atmosphere for all attendees.

Low-Carbon Dining Experience

We have partnered with the Pan Pacific Hotel to craft a low-carbon menu. By prioritising plant-based, locally sourced ingredients, we've significantly reduced the emissions associated with food production. Every dish is designed with sustainability in mind, offering both delicious flavours and a

Supporting Local Communities

We have chosen to work exclusively with local businesses and vendors. From the event décor to logistics, every partner is locally based, reducing transportation-related emissions and supporting the local economy.

Avoiding Air Travel for Speakers

None of our speakers have specially flown in for the event. Our speakers are predominately local to avoid air travel.

Lanyards

Instead of traditional lanyards that often go to waste, we're using eco-friendly wristbands made from recycled materials. These wristbands include a QR code that links to a dedicated microsite with event details. This not only cuts down on waste but also eliminates the need for printed programmes, supporting a paperless experience. Plus, it encourages us to connect with one another personally, rather than through job titles or affiliations.

Minimising Single-Use Items

We've taken great care to avoid single-use materials wherever possible. Instead of printed menus, for example, we're using flowers from a local florist to indicate meal preferences, a touch that is both eco-conscious and adds a beautiful, organic element to the tables. We are not printing new banners and will use the stage LED wall instead of a photo wall.

We have thoughtfully curated this event to prioritise sustainability at every turn. Our goal is not just to host a memorable gathering, but to set a meaningful path for future CoreNet Global Singapore Chapter Symposiums.

We've teamed up with Chef Boone, Sous Chef Sum, and Pastry Chef Eunice to craft a specially curated low-carbon menu for the Empower 360 Symposium. For details, please refer to your menu guide.

FROM THE FARM TO THE TABLE

This vegetarian menu is thoughtfully curated & brought to you with sustainability in mind. We are proud to offer dishes made from ingredients sourced locally, responsibly, ensuring a minimal impact on our environment

Sustainable sources

- All fruits & vegetables are sourced from local farms, reducing transportation emissions & supporting regional growers.
- Our plant-based dishes require significantly less water & land compared to traditional meat-based options, conserving vital resources.
- Ingredients are chosen for their season ability, which ensures fresher produce and reduces the need for long-distance shipping.

Why eating vegetarian is good for the planet

1. Plant-based meals produce fewer greenhouse gases than meat-based meals, helping to mitigate climate change.
2. Growing vegetables, grains, fruits use far less water and land, promoting more efficient use of natural resources.
3. By choosing vegetarian options, we reduce the demand for intensive livestock, which contributes to deforestation & habitat loss.

Thank you for joining us in making a positive impact. Your meal today not only nourishes your body but also contributes to the wellbeing of our planet.

Enjoy your delicious, sustainable feast!

Bon Appetit!

For details, please refer to your menu guide.

FROM LAND & SEA

This menu is carefully selected that prioritizes sustainability while delivering an exceptional dining experience. Our dishes feature responsibly sourced ingredients, including fish and meat, with a commitment to minimizing environmental impact.

Sustainable Sources:

***Fish: All fish served is sustainably sourced, ensuring it comes from well-managed fisheries or certified aquaculture farms. This helps maintain healthy fish populations and marine ecosystems.*

***Meat: Our meats are sourced from farms that follow ethical and sustainable practices, such as free-range, grass-fed, and organic farming. These methods support animal welfare and reduce the environmental footprint.*

***Local Produce: We prioritize locally grown fruits, vegetables, and herbs, reducing transportation emissions while supporting regional farmers.*

Why Sustainability Matters

- Sustainable fishing and farming practices protect biodiversity and ensure long-term food security, preserving ecosystems for future generations.*
- Responsibly sourced meat and fish help reduce the carbon footprint associated with large-scale industrial farming and fishing.*
- By choosing local and seasonal ingredients, we help lower the overall environmental impact of food production, promoting a more balanced relationship with nature.*

Thank you for choosing to dine with us. Every bite you take supports more sustainable and mindful food systems. We hope you enjoy your meal knowing that it's both delicious and thoughtfully sourced!

Bon Appetit!

Your Symposium Team



Andrew Alldis
Executive Director
Standard Chartered
Symposium Co-Chair

Andrew Alldis is an award-winning real estate and workplace strategy leader with over a decade of experience managing high-profile portfolios across the Globe. As Executive Director at Standard Chartered, he optimised the global real estate portfolio and co-authored the bank's Flexible Work policy. Previously, he developed strategies, driving innovation through gamification and human-centered design. Andrew has won Singapore Good Design Awards for both Experience and Sustainable Design, demonstrating a proven ability to enhance customer satisfaction and operational efficiency in complex environments.



Jade Tong
Business Development
Consultant
Symposium Co-Chair

With over 27 years of experience in CRE, IFM, and consulting, Jade is an experienced leader known for driving growth at regional and country levels. She has successfully increased revenue across diverse markets and led strategic initiatives that bolster organisational resilience. Jade's leadership prioritises collective spirit and strong organisational culture. A passionate advocate for young talent, she combines creativity with business acumen, empowering organisations to thrive in a dynamic marketplace. Her holistic approach to leadership ensures that success is driven by the collective efforts and values of her team.



Susanna Hasenoehrl
Head of Sustainability, SAP
Asia Pacific and Japan
Keynote Speaker

Susanna Hasenoehrl is SAP's Head of Sustainability in Asia Pacific and Japan. Susanna has 20+ years of leadership experience in sustainability and technology across Asian and global markets. She is presently focused on using technology and data to drive sustainability outcomes for SAP's customers across 25 industries in pursuit of decarbonisation, circularity and social equality. In particular, she is an expert on AI & sustainability, carbon accounting, traceability, and other digital ESG and EHS solutions.

Susanna holds an MBA in International Business from Leopold- Franzens Universität in Innsbruck, Austria and is an accredited 'Climate Reality Leader' as part of former US Vice President Al Gore's global initiative.



Anthea Indira Ong
Former Parliamentarian,
Board Chair/Director, and
CEO, Keynote Speaker

Anthea Indira Ong is a former Nominated Member of Parliament in Singapore and a prominent advocate for mental health, social inclusion, and sustainability. With over 25 years of experience as a social entrepreneur, leadership coach, and impact investor, Anthea brings a unique perspective on the intersection of personal well-being and societal change. She is the founder of several social initiatives, including Hush TeaBar, Singapore's first silent tea bar promoting mental health, and SG Mental Health Matters, a community platform for mental health advocacy. Anthea holds an MBA from the National University of Singapore and is a Yale World Fellow, recognised for her leadership in global issues, particularly in promoting inclusive and sustainable communities.



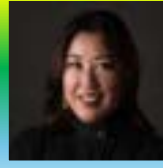
Koon Kok Kwong
CTO of Smart Urban
Co-Innovation Lab
Speaker

Kok Kwong's role in the Smart Urban Co-Innovation Lab involves stitching gaps in technologies with an ecosystem approach, translating "what technology does" to "what technology can do", and narrating co-innovations as investments rather than a cost item. He brings adopters and innovators together to address smart city challenges in Intelligent Estate, Wellness, Sustainability, Healthcare, Mobility, Urban Logistics, Urban Agriculture, Advanced Manufacturing, and Cloud Computing. A biologist and microbiologist from Oklahoma State University, Kok Kwong researched haemophilia and thalassemia, did sales and marketing in life sciences, developed industry clusters in the real estate sector prior to his current role. He is passionate in fostering eldercare services.



Lim Chee Chong, PHD
Director of Advance Smart
Technology
Speaker

Dr Lim Chee Chong is the Director of Advanced Smart Technology (AST), a deep technology company specialising in innovations that enhance and optimise energy efficiency in the built environment. In recent milestones, Chee Chong and his team successfully tested AST's energy optimisation and renewable energy solution at the Smart Urban Commendation Lab and the Galen Building, achieving an average utility savings of 20–30%. This innovation, HyESys, enabled user-load side without compromising the user experience. Chee Chong holds a PhD in Electrical and Electronics Engineering from Nanyang Technological University and has over four patents in Singapore and the United States.



Lynette Lee,
Board Chair/Director,
and CEO
Speaker

Role: Chief Sustainability Strategy Officer at Andaman Golf Resorts and Residences; CEO at Sirius Impact Venture Pte Ltd; Executive Ambassador at First Rate Ventures. Speaker. I am an ESG champion leader with a proven track record in driving sustainable innovation within the Fintech industry. With experience as a CEO in a Standard Chartered subsidiary-HUma.eco, I bring a unique blend of financial expertise and sustainability commitment to my current roles. As the fractional Chief Sustainability Strategy Officer at Andaman Golf Resorts and Residences, I develop and implement sustainable practices across the company's operations. As CEO of Sirius Impact Venture Pte Ltd, my focus is on investing in technological solutions with a strong ESG focus. My expertise and passion for sustainability have led me to become an Executive Ambassador for First Rate Ventures, promoting sustainable investing and entrepreneurship.



Martyn Harrison
Sustainability Strategy &
Solutions Director, CBRE
Speaker

Martyn has about 15 years' experience in sustainability across a range of industries including retail, multi-utilities, and the public sector and he currently serves as the Sustainability Strategy and Solutions Director for Global Work Solutions, CBRE across APAC. He helps companies better manage their portfolio, sustainability performance, staff engagement and setting and then achieving their goals. His motto of, 'I am just trying to save the planet in my own special way' reflects who he truly is as a passionate leader and advocate for building sustainability into every aspect of a company's decision making and operations.



Hans Weemaes
Director of Sustainability
Turner & Townsend
Speaker

Hans Weemaes, has over 15 years of international career in a Sustainability, Consulting, and Education. He has an MBA from London Business School, and a Masters in Business from Erasmus University in the Netherlands. His strength is to communicating complex concepts in a straight-forward language to a general audience, whether this in the class, meeting- or boardroom. Hans works at Turner & Townsend as the Director of Sustainability, helping clients in Asia transition towards Net Zero. Prior to this he worked as the Managing Director of NEAPOLI, one of Malaysia's leading Green Building Consultancies. He also worked as a Visiting Professor at Yonsei School of Business, where he taught Strategic Management, Entrepreneurship and Project Management.



Lee Qi Ni
Corporate Responsibility and
Diversity, Equity and Inclusion
Lead, MYSG, Sodexo
Speaker

In her current role, Qi Ni drives business practices across areas including but not limited to food waste management, single-use plastic alternatives, sustainable eating, sustainable sourcing, carbon footprint reduction, gender empowerment and hiring of people with disabilities. With her experience in managing sustainability, community investments and philanthropic donations for businesses across food and beverage, hospitality, consumer retail and wellness sectors, Qi Ni firmly believes that sustainability can become second nature to businesses and individuals. Qi Ni holds a Bachelor of Business and Master of Science in Applied Gerontology from Nanyang Technological University, Singapore.



Mathew Howe
Founder of Grobrix
Speaker

Mathew Howe is the founder of GrowBrix in Singapore, a company focused on sustainable urban farming through innovative modular, edible green walls. His passion for urban agriculture began when he started growing basil for his family and quickly expanded into a full-fledged business. GrowBrix integrates precision farming technology with aesthetics, making indoor farming accessible and visible to urban communities. With a commitment to sustainability, the company offers Farming as a Service, providing solutions for homes and commercial venues, while reducing food miles and promoting self-sufficiency.



Hansen Oei
Founder of Nautika Dive
Alor and The Nautika
Foundation, Speaker

Hansen Oei is the founder of Nautika Dive Alor, a dive resort located in the biodiverse waters of the Alor Archipelago, Indonesia. Beyond its diving services, Nautika is committed to protecting the fragile marine ecosystems through initiatives like the Nautika Foundation, which focuses on coral reef conservation and community empowerment. Under Hansen's leadership, the foundation organises coral restoration projects, raising awareness about the importance of coral reefs, and involving local communities in conservation efforts. The foundation also works to educate locals and visitors alike on sustainable practices to reduce human impact on the reef systems. In line with its mission, Nautika champions eco-friendly practices across its operations and supports fair treatment and professional growth of its local staff, contributing to a more sustainable and equitable tourism model.

.....
Gaia Table Sponsors



.....
Terra Table Sponsors



.....
Oasis Table Sponsors



Purpose Made Possible

Thank you to our incredible Table Sponsors

A heartfelt thank you to our table sponsors for your invaluable support at the CoreNet Global Singapore Chapter Empower 360 Symposium. Events like this simply wouldn't be possible without your generosity and sponsorship.

A special acknowledgment goes to the sponsors of the **Gaia Tables; CBRE and T1 Glass**, for your commitment to sustainability and innovation.

Our sincere thanks to the sponsors of the **Terra Tables; Trascent, CBRE, Savills, Colliers, and Interface** for your dedication to excellence and driving progress in corporate real estate.

And a big thank you to the **Oasis Table sponsors; Gensler, Sodexo, and Steelcase** for helping to create a platform for meaningful discussions and connections.

Your continued support makes this event, and our shared vision for a sustainable future, a reality. We couldn't have done it without you!



Anne Lau
APAC Cluster Lead, Teva
Pharmaceutical
Speaker/ Symposium Team

Anne is the former APAC Sustainability Lead at GlaxoSmithKline, where she passionately advocated for sustainability initiatives aligned with global programs. With a focus on changing mindsets and adopting innovative solutions, she emphasizes increasing circularity and optimizing natural resources in the built environment through open-mindedness and agility. Anne is dedicated to inspiring others to embrace sustainable practices that foster a healthier planet and drive meaningful change in organisations. Anne holds a Bachelor's degree in Mechanical Engineering from Nanyang Technological University and has furthered her expertise with a certification in Circular Economy and Sustainability Strategies from the University of Cambridge.



Deana Ahmad
Regional Transactions,
Global Occupier Services,
APAC Savills, Symposium
Team

Deana Ahmad is a Regional Transaction specialist at Savills, where she plays a pivotal role in driving strategic initiatives within the real estate market. With a strong background in transaction management, she focuses on facilitating high-value deals and enhancing client relationships across the region. Deana's expertise is instrumental in supporting Savills' expansion efforts and providing tailored solutions for various stakeholders in the property sector. Her approach combines in-depth market knowledge with a commitment to delivering exceptional service, positioning her as a key player in Savills' ambitious growth strategy in the competitive real estate landscape.



Benny Ong
Vice General Manager
Plus Space International
Symposium Team

Benny Ong is the Vice General Manager of Plus Space International, a company that specializes in construction and project management. With extensive experience in the field, Benny plays a key role in overseeing various aspects of the company's operations, including client relations, project planning, and execution. He is known for his leadership skills and a deep understanding of the industry, contributing significantly to the firm's success in delivering high-quality services and space management solutions.



Dipti Sharma
Workplace
Experience Lead,
APAC, GSK
Symposium Team

Dipti Sharma is dedicated to creating dynamic and healthy work environments, with her role at GSK enabling her to impact employee well-being. Her career began with a focus on design aesthetics and has evolved into the strategic development and implementation of workplace solutions that address diverse needs. As GSK, she actively promotes diversity and inclusion while managing strategic business development initiatives. Dipti navigate complex project ecosystems using her credentials as an ICAgile Certified Professional to enhance workplace experience through data-driven insights.



Joel Shears
Senior Client Manager
M Moser
Symposium Team

Joel Shears is a Senior Client Manager at M Moser Associates, where he focuses on delivering innovative workplace design solutions that enhance the employee experience. With a strong background in client relations and project management, Joel plays a crucial role in guiding clients through their workspace transformation journeys. His expertise lies in understanding client needs and aligning them with M Moser's design philosophy, which prioritises user-centric environments that foster collaboration and creativity. Joel's commitment to excellence ensures that projects meet both functional and aesthetic standards, contributing to the overall success of M Moser's global initiatives.



Owen Lee
Managing Director
Eurasia Interior
Products
Symposium Team

Owen Lee is the Managing Director of Eurasia Interior Products, a company that specialises in providing acoustic architectural products across Asia. Eurasia offers innovative interior solutions that focus on both auditory and visual excellence, particularly in decorative and functional spaces. Owen Lee has been with Eurasia for six years and has over 15 years of experience spanning various industries including aviation, sourcing, and construction. His leadership at Eurasia supports creative and sustainable interior design solutions for architects and designers.



Kenneth Low
APAC Change Lead
CBRE
Symposium Team

Kenneth Low is the APAC Change Lead at CBRE, Singapore, focusing on workplace transformation and change management across the region. He has extensive experience in business development, having held leadership roles in companies like Teknion and Steelcase prior to joining CBRE. His work in commercial real estate centres around improving workplace environments and enhancing employee experiences through innovative solutions. Based in Singapore, Kenneth's expertise spans corporate real estate services, facility management, and productivity improvement initiatives.



Thangaraj Muthu
Managing Director
Zyeta
Symposium Team

Thangaraj Muthu serves as the Managing Director of Zyeta, overseeing operations in Singapore and Malaysia. With a robust background in workplace design, he leads the firm's mission to create human-centric, sustainable workspaces that enhance productivity and foster inclusivity. Under his visionary leadership, Zyeta has embarked on a strategic expansion into Southeast Asia, opening its first international office in Singapore. Thangaraj is known for his ability to integrate technology, sustainability, and well-being into workspace design, reflecting his commitment to innovative solutions that meet the diverse needs of clients.



Steven Louie
Designer, Educator,
Lecturer, Mentor
Symposium Team

With over fifty years of global experience in the delivery of major architectural and interior design projects, Steven Louie has built an impressive, diverse career. His journey includes 30 years as Principal and Regional Design Director at Gensler, where he led groundbreaking projects across key cities including New York, Boston, London, Tokyo, Taipei, Bangkok, and now Singapore. Beyond Gensler, Steven has held senior leadership roles at M Moser, Geyer, and PSG. His influence extends into education, where he spent six years as a Senior Lecturer at Temasek Polytechnic's School of Design and served as an Adjunct Lecturer at Raffles College of Higher Education. Steven's contributions also include his work with CoreNet's Singapore Chapter, where he has been an active member of the Learning and Development Committee for the past six years. He is the creator of the acclaimed "Learn. Unlearn. Relearn." lecture series, designed to inspire and equip the next generation of designers.



Huziah Yusof
CoreNet Global Singapore
Chapter Administrator
Symposium Team

Huziah Yusof serves as the Chapter Administrator for the CoreNet Global Singapore Chapter. With her vast experience at Singapore Airlines, National Museum of Singapore and in various MNC of the construction industry, her role is vital in ensuring the smooth execution and publicity of events and resources as well as in supporting chapter's initiatives, especially those relating to corporate real estate and workplace strategy. Huziah facilitates communication between the Chapter's executive board, members, sponsors, and partners, contributing significantly to the Chapter's win as Global Large Chapter of the Year for 2022 & 2023 and its reputation as a premier platform for corporate real estate professionals based in Singapore.





Steelcase®

Flol:
Inspire great work

M
MASE Lifestyle

**louis
poulsen**

HAWORTH



Humanscale®
Zenith



Lucky Prize Draw

Lucky Draw Rules – Let the Fun Begin!

1. Be there or be square—you've got to be in the room to win!
2. Prizes are yours and yours alone—no swapping or sneaky transfers.
3. Only registered symposium attendees can join the fun.
4. Winners will be announced live, so keep those ears open!
5. Miss your name? We pick again—don't miss your moment!

Good luck, and may the odds be ever in your favour!

Get pumped for some seriously awesome prizes at tonight's lucky draw! Whether you're ready to dive deep with one of **two PADI Open Water diving courses in Alor, Indonesia**, give your home office a style upgrade with **cool chairs or swanky designer lamps**, or level up your life with an empowering **UNSTUCK coaching**, we've got something epic in store. Let's see who's walking away with the goodies.



Nestled in the heart of the Coral Triangle, the Alor Archipelago in East Nusa Tenggara, Indonesia, is home to both Nautika Dive Alor and Nautika Foundation. This region boasts 75% of the world's coral species, making it one of the richest and most biodiverse marine environments on the planet. With this beauty comes a profound responsibility to preserve it for future generations.



Steelcase®

Steelcase is a global design and thought leader in the world of work. Along with our expansive community of brands, we design and manufacture innovative furnishings and solutions to help people do their best work in the many places where work happens.



Steelcase Series 1

Flokk

Inspire great work

Flokk is a leading manufacturer of high-quality, sustainable seating solutions for workplaces and public spaces in Europe. Founded in 2017, Flokk combines the heritage of brands like Giroflex (established in 1872) and HÅG (1943) to create innovative designs focused on health and well-being



Tion Chair



MASE Lifestyle

UNSTUCK™ is a transformative wellness programme designed to help you break free from emotional burdens, limiting patterns and beliefs.

Guided by Wellness Coach and Creative Mae Kwan, this comprehensive approach empowers you to shift your perspective, define your vision, stay on your path and thrive.



louis poulsen

The Panthella 160 Portable is a petite and portable version of the classic Verner Panton icon- the Panthella, which was designed in 1971. The recognisable, soft organic shape of the table lamp is not only beautiful but also functional, perfect for everyday use around the home against many different settings.



Panthella 160 Portable

HAWORTH

Haworth is a leading global provider of office furniture and workspace solutions, known for its innovative designs that enhance productivity and well-being. Committed to sustainability, the brand combines functionality with aesthetics, creating adaptable environments that support collaboration and individual needs in modern workspaces.



Zody Chair



The Pan Pacific Orchard Brunch offers a luxurious dining experience with a delightful selection of Mediterranean-inspired dishes. Enjoy freshly prepared appetizers, cold cuts, vibrant salads, signature mains, exquisite desserts, chocolates, and artisanal cheeses. Perfect for a special treat, this brunch is a great way to indulge and celebrate with a loved one.



2 x Brunch for 2 people voucher

Humanscale®

Trea can be adapted for both office and home interiors. The chair's four-star, cantilever or four-leg bases are interchangeable, so Trea can be customised for different environments and uses while maintaining visual consistency throughout a space. Furthermore, Trea is Living Product Certified, meeting the most rigorous sustainable manufacturing criteria to date.



Trea Chair

Zenith

Meet Denn, a high-performance task & multipurpose chair that redefines style and comfort in modern workspaces. Denn's refined aesthetic encapsulates simplicity, bringing new levels of elegance to any workplace. The unique and transparent polycarbonate feature allows Denn to respond to changing light and effortlessly blend into any space.



Denn Chair

Our Chapter Sponsors: Partners in Success

The CoreNet Global Singapore Chapter, awarded Chapter of the Year for 2023, stands as one of Asia's most dynamic and influential groups in the corporate real estate sector.

We serve as a vital platform for CRE professionals to exchange insights and collaborate on industry-shaping ideas. By fostering a diverse and highly engaged community, the Chapter drives innovation and supports the development of future leaders in the CRE space, ensuring that Singapore remains at the forefront of the industry for years to come.

We extend our deepest gratitude to our chapter sponsors. Special thanks to our Platinum Sponsor - CBRE, Gold Sponsors - Plus Space and M Moser, Zyeta, and Silver Sponsors - T1 Glass, Zenith, and JEB, for their invaluable support and dedication to the corporate real estate community.



Platinum Chapter Sponsor

CBRE

Gold Chapter Sponsors

PLUSspace
International

M MOSER ASSOCIATES

ZYETA

Silver Chapter Sponsors

JEB

Zenith

T1 GLASS

Special Thanks



PAN PACIFIC
ORCHARD, SINGAPORE

A heartfelt thank you to **Wendy Soo, Chef Boone, Sous Chef Sum, Pastry Chef Eunice, Amelia Matheson**, and the team at Pan Pacific Orchard Hotel for their incredible patience and support. Your efforts have made a significant impact on our volunteer-driven event. We truly appreciate everything you've done.

Connect.

Learn.

Grow.

Belong.



EMPOWER360[®]

IGNITE CHANGE SYMPOSIUM

Thursday 17 October

17:00 – 23:00

Pan Pacific Orchard Hotel

10 Claymore Road, Singapore, 229540

singaporechapter@corenetglobal.org

Connect.

Learn.

Grow.

Belong.